

© Copyright for all the drawings and data herein in the drawings is retained by GEMAC ENGINEERING BUREAU. No part of this drawing may be reproduced or transmitted in any form or by any means electronic or mechanical, including photocopying, recording, or by any information storage and retrieval system, without the prior written permission of GEMAC ENGINEERING BUREAU.

- GENERAL NOTES:-**
01. ALL DIMENSIONS ARE IN MILLIMETERS AND LEVELS ARE IN METERS UNLESS STATED OTHERWISE.
 02. NOT TO BE EXERCISED, FOLLOWED OR SWORN AND NOT TO BE ASSUMED.
 03. FINAL LEVEL OF THE ACCESS ROAD IS CONSIDERED DRAWINGS ARE IN RELATION TO THIS LEVEL UNLESS STATED OTHERWISE.
 04. DIMENSIONS ARE IN RELATION TO THE CENTERLINE UNLESS OTHERWISE STATED.
 05. TOLERANCES ARE TO BE ALLOWED FOR FINISHES ETC. SIZES CONTRACTOR TO ALLOW SUITABLE FINISH.
 06. TOLERANCES MUST BE READ IN CONNECTION WITH DIMENSIONS AND PROFILE SHOULD BE VERIFIED.
 07. CERTIFICATE AND ANY DISCREPANCY SHOULD BE BROUGHT TO THE NOTICE OF THE CONSULTANT AT SITE BY THE CONTRACTOR AND NOTIFICATION TO COMMENCEMENT OF THE WORK IN THE EVENT OF ANY DISCREPANCIES ARISING FROM THE DRAWINGS.
 08. THE CONTRACTOR HAS TO VERIFY AT SITE THESE ELEMENTS ARE FOR GENERAL GUIDANCE ONLY.
 09. THE DETAILS GIVEN IN THE DRAWINGS ARE FOR PREPARE AND SUBMIT DETAILED AND COMPREHENSIVE SHOP DRAWINGS FOR CONSULTANT'S APPROVAL.
 10. THE CONTRACTOR MUST PREPARE MOCKUP SAMPLES BASED ON APPROVED SHOP DRAWINGS FOR TWO STAGES ARE COMPLETED TO THE SATISFACTION GRANTED FOR THE SAME WRITTEN APPROVAL.
 11. SIZES AND LOCATIONS OF ELECTRO-MECHANICAL RESPONSIBILITY OF THE MAIN CONTRACTOR TO COORDINATE WITH SUB CONSULTANTS AND FOR THESE ELEMENTS PRECISELY DURING EXECUTION OF THE WORK.

LEGEND:

- 200mm THK. BLOCK WALL
- 100mm THK. BLOCK WALL

* ALL PRE-ENGINEERED STEEL COLUMN EMBEDDED IN CONCRETE UP TO 300 MM HIGH FROM F.F.L (TYP.)
 * 1/2" FIRE PROTECTION IN THE FORM OF ANTIMONY PAINT FOR MANGANESE STEEL STRUCTURE TO BE PROVIDED.
 * PRE-ENGINEERED STRUCTURE TO BE DESIGNED WITH PROVISION FOR INDUSTRIAL CRANE OF LOAD CAPACITY 50 T.

Ref No.	DATE:	REVISIONS	DRN. BY:

بيت التمويل الكويتي
Kuwait Finance House

DAVIS LANGDON
 CHARTERED QUANTITY SURVEYORS
 P.O. Box 640, Manama, Kingdom of Bahrain
 Tel: +973 17827567 Fax: +973 1722210
 e-mail: info@davislangdon.com

NEP SERVICES CONSULTANTS
GEMAC
 General Engineering & Management Consultants
 P. O. Box 5797, Manama
 Kingdom of Bahrain
 Project: + (973) 17241000
 Tel: + (973) 17241000
 e-mail: bahras@gemac.biz

مكتب مهندسي دهييا تومعيل
DHEIYA TOMECI ENGINEERING BUREAU
 Architects & Engineers
 P. O. Box: 15448, Manama, Kingdom of Bahrain
 Tel: +973 17241000
 Fax: +973 17241000
 e-mail: dtheiya@dhiebureau.com

PROJECT TITLE:
PROPOSED KFH INDUSTRIAL OASIS @ BIRP HIDD (INDUSTRIAL BUILDINGS)

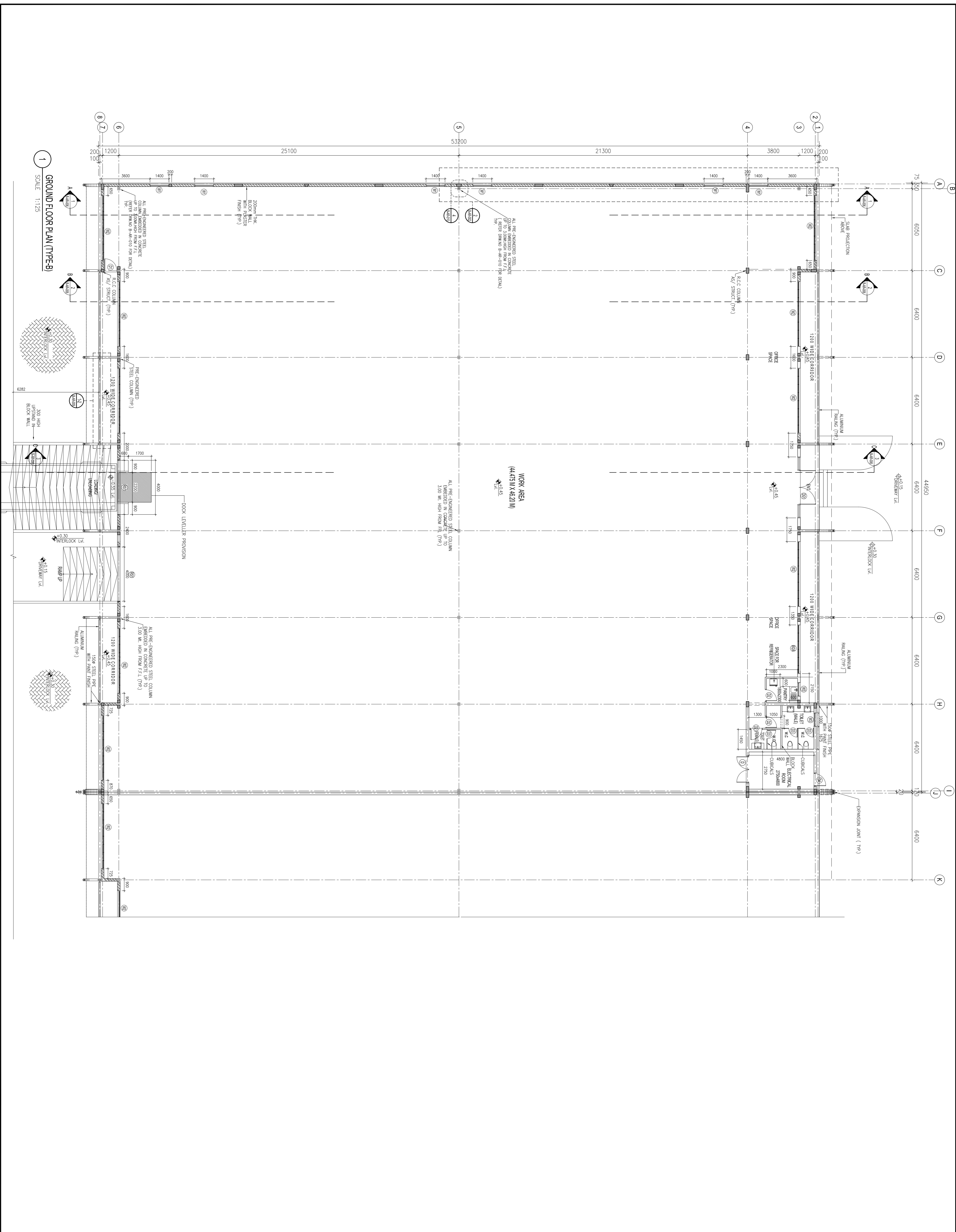
C. R. No.: 50472.1

BRAWING DESCRIPTION:
B1-M1 GROUND FLOOR PLAN

DESIGNED BY: JM
 DRAWN BY: IQ
 CHECKED BY: JM
 APPROVED BY: DT

BRAWING TYPE:

JOB No.: P-323
 DWG No.: ..
 REV No.: 0
 SCALE: AS SHOWN
 DATE: JULY 2010



GROUND FLOOR PLAN (TYPE-B)
 SCALE: 1:125